

Stools, Chairs and Armchairs Maintenance Guide

You need use for clean each type of material the right product.

Upholstery:

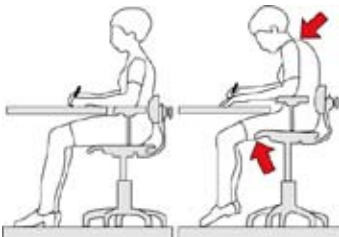
- Fabrics: Clean them with dry foam. You must remove the remains of dry foam.
- Nappel, leatherette and plastic: Water-dampened cloth and mild soap.
- Leather: Cloth moistened with water and neutral soap or cleaning product specific natural leather upholstery.

Components:

- Woods: Cloth moistened with water (only if necessary to add neutral soap).
- Plastic: Damp cloth
- Painted metal: Alkaline-dampened cloth.
- Metal chrome or polished: Soft cloth or metal brightener.
- Wheels: Keep them clear of debris inside the spin axis.

WARNING

NOT HANDLE THE ADJUSTMENT CYLINDER
SEAT HEIGHT.
IT ONLY SUPPORTS CHANGE



The role of a good seat is to provide a stable support to the body, in a comfortable position and for a reasonable period of time appropriate to the activity taking place, for this:

- The seat height should be adjusted to allow for a thigh-leg angle of 90 degrees or so, allowing their feet on the ground or possibly in external support to the chair.
- If the chair is equipped with longitudinal adjustment of the seat, it must be located so that its depth is less than the length of the thigh. This allows a effectively use of the backrest without the edge of the seat press the back of the leg.
- The backrest height should be adjusted to position himself in the convexity of the lumbar area of the back.
- To prevent overloading of muscle in your back is advisable to vary the inclination to adapt the type of work performed.